

CERTIFICATE OF LOCATION OF GOVERNMENT CORNER

NORTH QUARTER Corner of Section 30, Township 108 N, Range 43 W, 5th P.M.
 STATE OF MINNESOTA, County of MURRAY

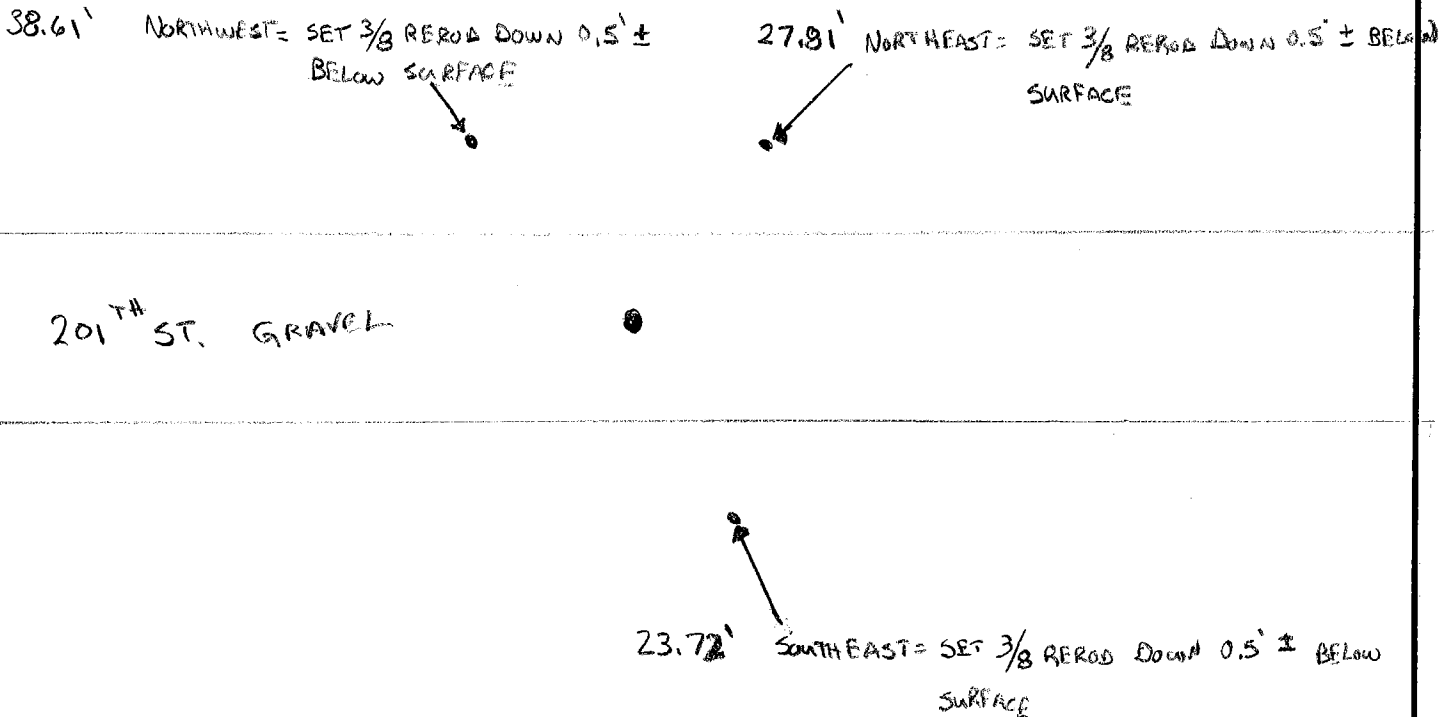
At the corner location shown on the sketch:

On 7/5/07 found a 1/2" CAPPED IRON REROD # 11943 Down 0.3' BELOW SURFACE

left monument as found, lowered monument, removed monument (explain)

On _____ placed a _____

SKETCH OF REFERENCE TIES



Statement of evidence relative to this corner location is on back of page.

I hereby certify that this document and the data contained herein was prepared by me or under my direct supervision.

[Signature]
SIGNATURE

Registration No. 40853

- Land Surveyor, Professional Engineer
- County Surveyor, County Engineer

OFFICE OF THE COUNTY RECORDER
 County of _____

I hereby certify that this document was filed in the Co. Records office at _____ M. on the _____ day of _____ A.D., 20____

County Recorder _____
 By _____, Deputy
 DOCUMENT NO. _____